



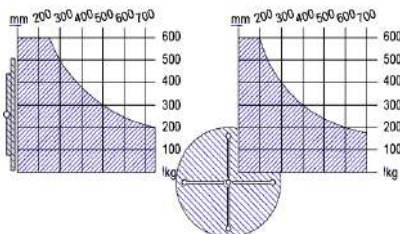
Le positionneur **ECO-3A** permet le positionnement de vos pièces dans **les 3 axes**, pour des charges **jusqu'à 20 T**



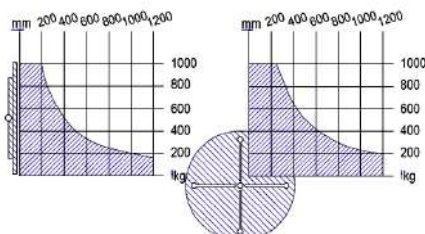
POSITIONNEUR 3 AXES

MODELE	POIDS MAX.	DISTANCE DE GRAVITE	DISTANCE D'EX-CENTRICITE	INCLINAISON	DIAMETRE TABLE	VITESSE DE ROTATION	ENCOMBREMENT
ECO-3A-0,6T	600KG	250mm	200mm	-45°-135°	900mm	0.1-1 rpm	1800x1150x750mm
ECO-3A-1T	1000KG	250mm	200mm	-45°-135°	900mm	0.1-1 rpm	1940x1150x750mm
ECO-3A-2T	2000KG	250mm	200mm	-45°-135°	1000mm	0.1-1 rpm	1990x1250x850mm
ECO-3A-3T	3000KG	300mm	200mm	-45°-135°	1400mm	0.05-0.5 rpm	2250x1500x990mm
ECO-3A-5T	5000KG	300mm	200mm	-45°-135°	1500mm	0.05-0.5 rpm	2430x1850x1190mm
ECO-3A-10T	10000KG	400mm	200mm	-45°-135°	2000mm	0.05-0.5 rpm	3660x2000x1400mm
ECO-3A-20T	20000KG	600mm	250mm	-45°-135°	2000mm	0.05-0.5 rpm	4650x2150x1526mm

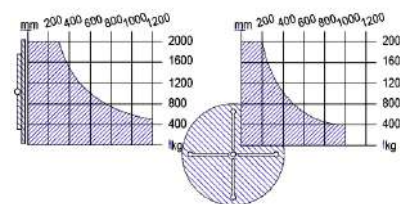
ECO-3A-0,6T



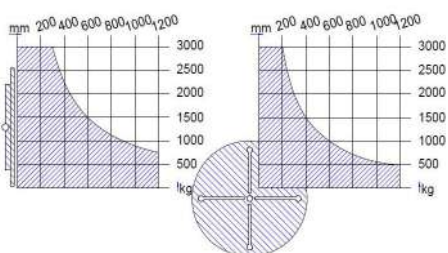
ECO-3A-1T



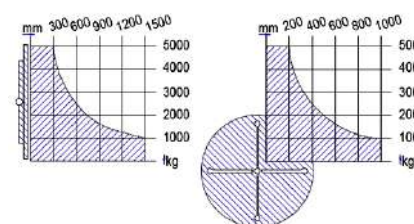
ECO-3A-2T



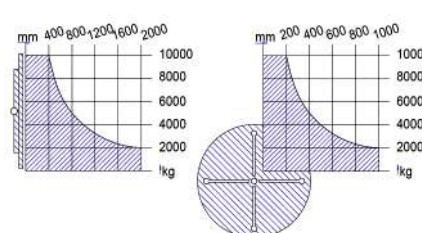
ECO-3A-3T



ECO-3A-5T



ECO-3A-10T



21 rue de Sassenage – 38600 FONTAINE

Tél : 04.76.01.03.01 – www.ecofitec.com – www.ecofitec-coupage.com

info@ecofitec.com

